

GE Healthcare

Transducer Guide

LOGIQ P-Series



Form meets function

GE Healthcare offers a wide variety of high bandwidth, ergonomic transducers for a broad range of clinical applications – empowering you to easily make the most of the advanced technology on your LOGIQ® P-Series ultrasound system.

Every design decision is made with patient and user comfort in mind, to help reduce stress without compromising diagnostic performance. Our family of transducers helps deliver outstanding image capability with ergonomic benefits. The innovative broadband technology provides deep penetration and excellent resolution without the need to change transducers during the exam. These transducers can be used across multiple platforms, helping you achieve diagnostic confidence on a variety of the LOGIQ console ultrasound systems.

Choose from these transducers to meet your clinical needs.



3.8CA H47032LY



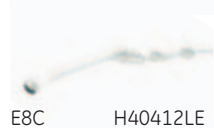
4C H4904PC



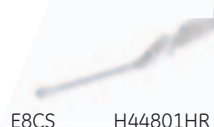
5CS H4001DC



8C H40412LJ



E8C H40412LE



E8CS H44801HR



7.5L H47032LZ



8L H4001DB



9L H40412LT



11L H40412LY



ML6-15 H40452LY

Applications	Footprint	Bandwidth	Biopsy Guide	Availability
Convex				
Abdomen, OB/GYN, Urology	17 x 65 mm	2.5-5 MHz	Multi-angle, reusable, disposable	P3
Abdomen, OB/GYN, Urology, Vascular	18 x 66 mm	1.6-4.6 MHz	Multi-angle, reusable	P3, P5, P6 Pro, P6
Abdomen, OB/GYN, Urology, Vascular	18 x 66 mm	2-5 MHz	Multi-angle, reusable	P3, P5, P6 Pro, P6
Micro -convex				
Neonatal, Pediatrics	22 x 12 mm	4-11 MHz	N/A	P3, P5, P6 Pro, P6
OB/GYN, Urology, Endocavitary	21 x 17 mm	4-11 MHz	Single-angle, reusable, disposable	P3, P5, P6 Pro, P6
OB/GYN, Urology, Endocavitary	14 x 19 mm	4-10 MHz	Single-angle, reusable, disposable	P3, P5, P6 Pro, P6
Linear				
Vascular, Small Parts, Neonatal, Pediatrics	9 x 44 mm	4.8 - 9.5 MHz	Multi-angle, reusable	P3
Abdomen, Vascular, Small Parts	14 x 47 mm	3.4-9.9 MHz	Multi-angle, reusable	P3, P5, P6 Pro, P6
Abdomen, Vascular, Small Parts, Neonatal, Pediatrics, OB/GYN	14 x 53 mm	2.7-7.8 MHz	Multi-angle, reusable	P5, P6 Pro, P6
Abdomen, Vascular, Small Parts, Neonatal, Pediatrics	13 x 47 mm	3.4-10.8 MHz	Multi-angle, reusable	P3, P5, P6 Pro, P6
Vascular, Small Parts, Neonatal, Pediatrics	16 x 61 mm	5-13 MHz	Multi-angle, reusable	P6



4D3C-L H44801G



4D5C-L H44801HT



4DE7C H44801GA



4D8C H44801GZ



3S H4701SZ



5S H40422LA



6S H47082LR



7S H40422LB



3SP H46222LE



5SP H46222LF



BE9CS H40452LF

Applications	Footprint	Bandwidth	Biopsy Guide	Availability
Real-time 4D				
Abdomen, OB/GYN	39 x 64 mm	2.2-4.1 MHz	Single-angle, reusable	P5, P6 Pro, P6
Abdomen, OB/GYN	38 x 64 mm	3-5.8 MHz	Single-angle, reusable	P6 Pro, P6
OB/GYN, Urology, Endocavitary	22 x 23 mm	4-9 MHz	Single-angle, reusable	P5, P6 Pro, P6
Neonatal, Pediatrics	23 x 27 mm	4-9 MHz	Single-angle, reusable	P5, P6 Pro, P6
Phased array				
Cardiac, Transcranial, Abdomen	19 x 28 mm	1.3-3.2 MHz	Multi-angle, reusable	P3, P5, P6 Pro, P6
Cardiac, Transcranial, Abdomen	19 x 28 mm	2.2-5.3 MHz	Multi-angle, reusable	P5, P6 Pro, P6
Pediatric Cardiac	17 x 23 mm	2-8 MHz	N/A	P3
Cardiac, Pediatrics, Abdomen	17 x 24 mm	3-8 MHz	N/A	P5, P6 Pro, P6
Cardiac, Transcranial, Abdomen	14 x 16 mm	1.5-5 MHz	Multi-angle, reusable	P5, P6 Pro, P6
Cardiac, Transcranial, Abdomen	10 x 10 mm	2-8 MHz	Multi-angle, reusable	P5, P6 Pro, P6
Specialty				
Urology, Endocavitary	19 x 22 mm	4-11 MHz	Single-angle, reusable, disposable	P5, P6 Pro, P6



Applications	Footprint	Bandwidth	Biopsy Guide	Availability
Specialty (cont.)				
Intraoperative, Small Parts, Vascular	14 x 48 mm	4-9 MHz	N/A	P5, P6 Pro, P6
Intraoperative, Small Parts, Vascular	14 x 48 mm	4-9 MHz	Multi-angle, reusable	P3, P5, P6 Pro, P6
Cardiac, Pediatrics	diameter 17 mm	2 MHz	N/A	P5, P6 Pro, P6
Cardiac, Pediatrics, Vascular	diameter 9 mm	5 MHz	N/A	P5, P6 Pro, P6
Urology, Transrectal	diameter 20 mm	Linear: 5.2- 7.8 MHz Convex: 5.2 - 7.8 MHz	Brachytherapy grid, bridge guide biopsy	P5, P6 Pro, P6
Intraoperative, Small Parts, Vascular, Neonatal, Pediatrics	12 x 32 mm	5-11 MHz	N/A	P5, P6 Pro, P6
Cardiac, Adult TEE	N/A	3-6 MHz	N/A	P6

GE Healthcare
 9900 Innovation Drive
 Wauwatosa, WI 53226
 U.S.A.

www.gehealthcare.com



©2011 General Electric Company – All rights reserved.

General Electric Company reserves the right to make changes in specifications and features shown herein, or discontinue the product described at any time without notice or obligation. Contact your GE Representative for the most current information.

GE, GE Monogram and LOGIQ are trademarks of General Electric Company.

GE Medical Systems Ultrasound & Primary Care Diagnostics, LLC, a General Electric company, doing business as GE Healthcare.